

## LIMITED TIRE WARRANTY

Warranty claims are processed directly by their **MANUFACTURER**. In order to expedite the processing of eligible claims, direct contact information is provided in this information card for each specific tire brand supplied to your Original Equipment Manufacturer by Tredit Tire & Wheel.

Although warranty qualifications vary by manufacturer, each warranty adjustment requires the availability of the following information:

- Tire Brand
- Tire Size
- Tire Load Range
- DOT Number (see illustration below)
- Proof of Purchase and/or Date of Manufacture



Please note that all warranty claims are subject to physical inspection.

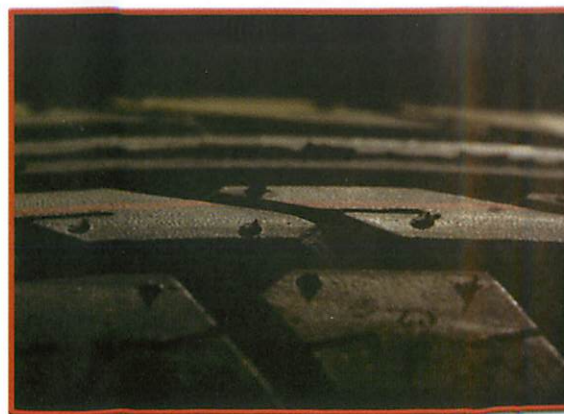
If you are unable to locate your tire brand within this information card or if you require additional information, please contact our service center at 1-866-443-9907

Failure to provide the defective product may result in an immediate dismissal of the warranty claim.

## TIRE WARRANTY CONTACT INFORMATION

- **DURO** - 866-788-2060
- **Tireco** - 800-937-9433  
Freestar, Geostar, Mudstar, Mobile Max, Geotrac
- **Goodyear** - 800-321-2136
- **Hercules** - 800-677-9535
- **TBC** - 800-238-6469  
TowMax, Roadrider, Trailer King, SolidTrac, Sailun
- **Voma** - 901-672-0816  
Liberty
- **Michelin** - 800-847-8475  
Uniroyal
- **Alliance** - 800-343-3276  
Galaxy
- **Tredit Tire** - 866-443-9907  
H188ST, Grand Ride, Trail America, Super A, Triangle

In the unlikely event that you are unable to receive service to your satisfaction, please contact our corporate service department for additional assistance at 866-443-9907



## Tredit Tire & Wheel Co.



### Limited Warranty

### Original Equipment User Guide

[WWW.TREDITTIRE.COM](http://WWW.TREDITTIRE.COM)



# LIMITED WHEEL WARRANTY

Tredit Tire & Wheel will assist in the processing of warranty claims for those wheels supplied and installed in accordance with the vehicle manufacturer or recommendation of Tredit Tire & Wheel. All warranties are subject to the wheel manufacturer's written policy which can vary in both scope and duration.

For further information regarding your specific policy, please contact Tredit Tire & Wheel.

When contacting our warranty department, please help us in expediting your claim by having the following information available:

- Wheel Size and Description
- Type of Finish (Steel, Galvanized, Aluminum)
- All Rim Marking (Typically located on the back of the wheel)
- Number of Lug Nuts
- Date of Purchase
- Vehicle Manufacturer Model
- Vehicle Identification Number

**White Spoke**



**Black T07**



**Silver Mod**



Please note that all warranty claims are subject to physical inspection by Tredit Tire & Wheel. Failure to provide the defective product may result in an immediate dismissal of the warranty claim.

For service or information in the U.S.A. or Canada please call 1-866-443-9907 or email [warranty@tredittire.com](mailto:warranty@tredittire.com)

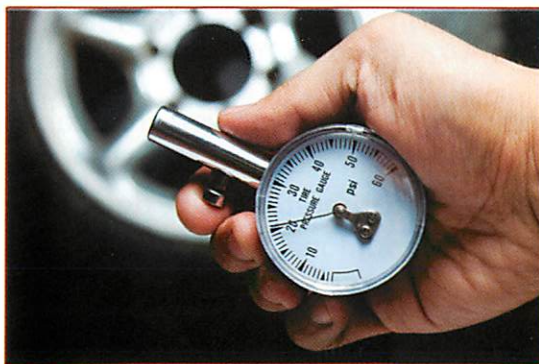
# Tire & Wheel Maintenance Guide

## GENERAL MAINTENANCE

The simplest way to ensure the longest life and mileage from your tires is to perform a frequent inspection for proper wheel torque, tire inflation (as stated on the tire sidewall or by the manufacturer's placard), even tread wear, and to visually confirm that there is no damage to your tire/wheel.

## PROPER INFLATION PRESSURE

The proper tire inflation is critical for safety, performance, and longevity. Trailer tires derive their load carrying capacity in large part from their inflated pressure; failure to maintain the proper levels can drastically increase the likelihood of a tire failure. Always use a properly calibrated pressure gauge to frequently test the air pressure of your tires.



## LOAD LIMITS

Always check your owner's manual to ensure that your tire/wheel is operating within its limits of carrying capacity. Overloading a tire/wheel assembly can cause poor handling, premature wear, and is the leading cause of tire failure. Never install new tires/wheels that are rated with a lower load capacity than those shown on the vehicle placard.



## WHEEL TORQUE

Using a properly calibrated torque wrench, all the lug nuts installed with any new tire/wheel assembly must have their torque values checked after the first 25, 50, and 75 miles (and periodically checked during normal use). This process should be repeated any time that the lug nuts are removed from the wheel.

## WHEEL CORROSION

Due to the chemical properties of the material used in the manufacture of wheels, it is recommended that consumers periodically use warm soap and water solution to rinse any solvents that may build up on the wheels which can lead to premature corrosion. Failure to do so may cause certain salt agents as well as other road treating chemicals to create an electrochemical reaction which may result in aesthetic defects to your new wheel. Avoid the use of harsh cleaning agents which may damage the protective coating on your wheels.

## SERVICE LIFE

Although it is not practical to accurately predict the service life of any specific ST or LT tire assembly, taking the proper time and care to maintain your tires will maximize the use of your tires/wheels. The service life of a tire is a function of its application, towing habits, frequency of use, and storage conditions. It is essential that consumers have their tires regularly inspected and serviced by an authorized tire dealer. Never attempt to mount or dismount your own tires, only specially trained persons should mount tires.