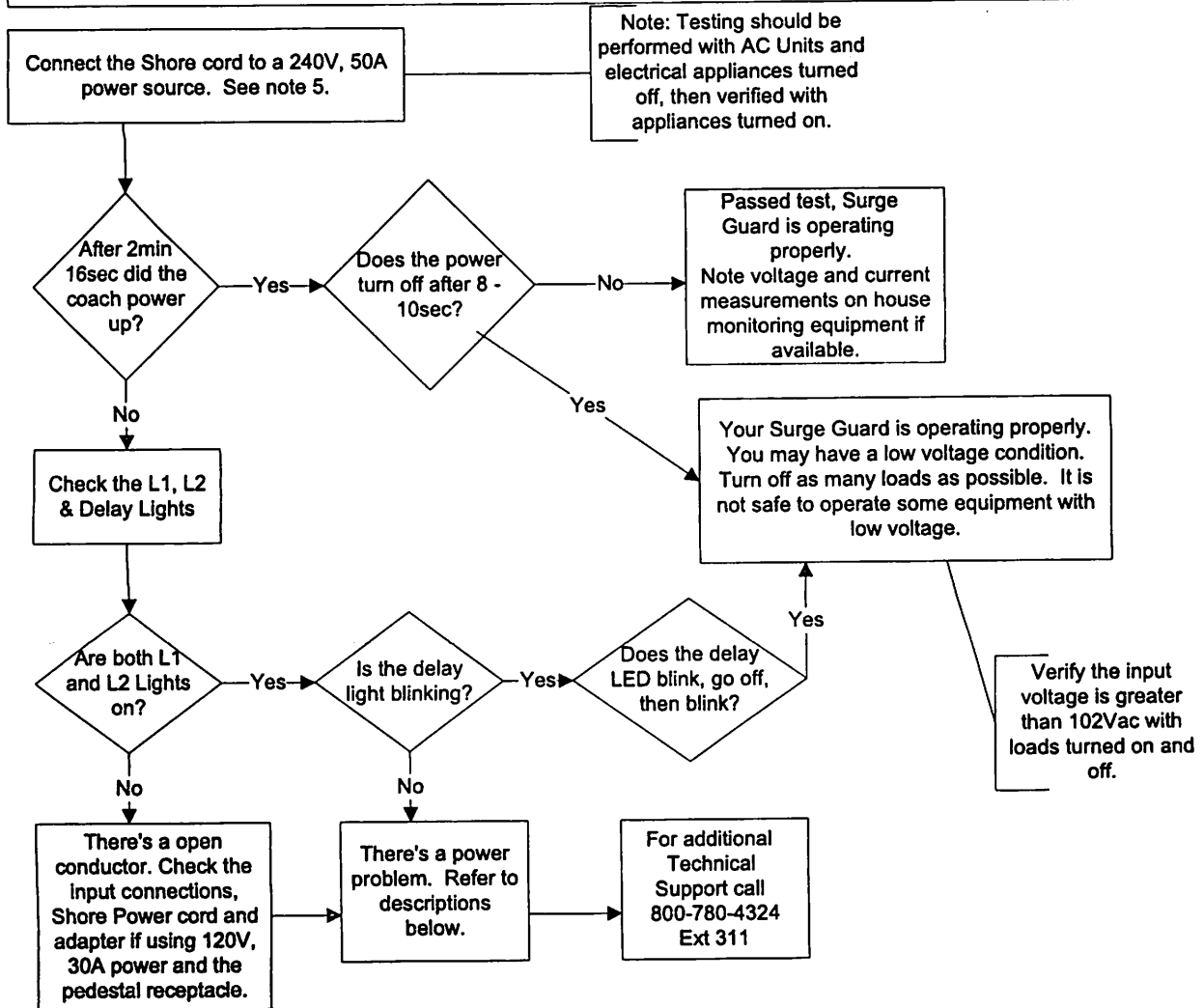


Surge Guard Power Monitor - Troubleshooting Guide

P/N 34750



1. Low Voltage - If the input voltage drops below 102Vac for more than 8 sec. the power will be removed protecting your electronics. This condition may be caused by overloading the parks power grid. Try reducing your loads. Otherwise, do not operate until power is restored to safe levels.
- 2 High Voltage - If the input voltage increases above 132Vac for more than 8sec, power will be removed. In Generator mode, check for load balance. If one leg of the generator has a heavy load and the other has a light load, it may cause high voltage. Check the Generators voltage regulator, and adjust to safe operating levels.
3. Line1, Line2 or Neutral open - Check all input wiring to the Surge Guard. Check Shore cord and wiring from the Generator if applicable. Replace Receptacle on pedestal. Check / replace adapter if reducing down to 120V,30A service. Notify park for shore power problems if applicable.
4. Caution Light - If the caution light is on bright, there is high voltage on the ground or neutral wires. If the light is dimly lit, there is a low voltage on the neutral wire. It is not uncommon for 2 to 3 volts to be on the neutral wire with respect to ground.
5. Note: This guide also applies if using 120V, 30A power with a suitable adapter.