

INSTALLATION AND OPERATING MANUAL

120 VOLT POWER UNITS

MODEL CS8 and CS-RM with POWER CORD

MODEL CS8-F and CS-RM-F for HARDWIRED

MODEL CS6 for Power Management



Model CS8



Vacuum valve

Model CS8-RM

PLEASE NOTE:

The **CS8** and **CS6** have 1 opening in the dust bag
The **CS-RM** has 2 opening in the dust bag

WARNING: Owner read carefully.

This manual must be read and understood before installation, adjustment, service or maintenance is performed.

This unit should be installed by a qualified technician.

Modification of this product can be extremely hazardous and could result in personal injury or property damage. Instructions must stay with unit.



InterVac Design Corp. ,
2939 SW 42nd Ave. Palm City, FL. 34990
1-888-499-1925 www.intervacdesign.com •
e-mail: intervac@intervacdesign.com



IMPORTANT SAFETY INSTRUCTIONS

interVac™

Polarization Instructions for Models CS8-H and CS-RM-H with Power Cord only.

These appliances have a polarized plug (one blade is wider than the other). This plug will fit in a polarized outlet only one way. If the plug does not fit fully in the outlet, reverse the plug. If it still does not fit, contact a qualified electrician to install the proper outlet. Do not change the plug in any way. DO NOT USE WITH EXTENSION CORD!

When using an electrical vacuum cleaner, basic precautions should always be followed including the following: Read all instructions carefully before using this vacuum cleaner.

WARNING: TO REDUCE THE RISK OF FIRE, ELECTRIC SHOCK, OR INJURY:

1. Do not leave appliance when plugged in. Unplug from an electrical outlet when not in use and before servicing.
2. Do not use outdoors or on wet surfaces.
3. Never operate this vacuum cleaner without a dust bag and filters in place.
4. Close attention is necessary when used by or near children. Do not allow unit to be used as a toy.
5. Use only for intended use as described in this manual. Use only the manufacturer's recommended attachments and dust bag.
6. Do not use with damaged cord or plug. If appliance is not working as it should, has been dropped, damaged, left outdoors, or fell into water, return the vacuum cleaner to InterVac or an authorized service dealer for examination and repair.
7. Do not put any object into openings. Do not use with any openings blocked; keep free of dust, lint, hair and any other material that may reduce air flow. When the secondary filter becomes dirty, rinse in warm water or replace with a new filter. Filter should be completely dry before using.
8. Never drop or insert any object into any opening.
9. Turn off all controls before unplugging.
10. Do not pull or carry by cord, do not use cord as a handle, do not close a door on the cord, or pull cord around sharp edges or corners. Do not run appliance over cord. Keep cord away from heated surfaces.
11. Do not unplug by pulling on cord. To unplug, grasp the plug, not the cord.
12. Keep hair, loose clothing, fingers, and all parts of body away from any openings and all moving parts.
13. Do not pick up anything that is burning or smoking, such as cigarettes, matches, or hot ashes.
14. Use extra caution when cleaning on stairs.
15. Do not handle plug or appliance with wet hands.
16. Do not pick up flammable or combustible liquids such as gasoline, or use in areas where they may be present.
17. Do not place objects against the vacuum cleaner. Keep area clear.
18. Do not step on the hose or pull the hose forcibly.
19. Do not pick up large objects such as waste paper or cloth, which may clog the hose.
20. Do not install this vacuum cleaner in an area exposed to high temperatures.
21. Install this vacuum cleaner in a dry place.
22. Do not attempt to service the vacuum cleaner. Unit is sealed and can not be opened without damage to the unit. For service, call your local authorized service dealer, or InterVac Design's Customer Care Center.

SAVE THESE INSTRUCTIONS for Household and R/V use

LIMITED WARRANTY

InterVac Design Corp. will repair the power unit with new or rebuilt parts, free of charge for three(3) years from the date of original purchase in the event of a defect in materials or workmanship. No cash refunds. Excluded are the following items that require normal replacement:

Disposable dust bags, filters, vacuum cleaner tools and vacuum hoses.

This warranty is extended only to the original purchaser. A purchase receipt or other proof of date of original purchase will be required before warranty performance is rendered.

You must return your warranty card or register on our website in order to be covered under these provisions.

This warranty only covers failures due to defects in materials or workmanship which occurs during normal use and does not cover damage which occurs in shipment or failures which are caused by products not supplied by InterVac Design, or failures which result from accident, misuse, abuse, neglect, mishandling, misapplication, alteration, modification, or commercial use such as hotel, office, restaurant or rental use of the product, or service by anyone other than an authorized service center, or damage that is attributable to acts of God.

There are no expressed warranties except as listed above.

LIMITS AND EXCLUSIONS:

INTERVAC DESIGN SHALL NOT BE LIABLE FOR INCIDENTAL OR CONSEQUENTIAL DAMAGES RESULTING FROM THE USE OF THIS PRODUCT, OR ARISING OUT OF ANY BREACH OF THIS WARRANTY. ALL EXPRESSED AND IMPLIED WARRANTIES, INCLUDING THE WARRANTIES OF MERCHANTABILITY AND FITNESS FOR A PARTICULAR PURPOSE, ARE LIMITED TO THE APPLICABLE WARRANTY PERIOD SET FORTH ABOVE.

Some states do not allow the exclusion or limitation of incidental or consequential damages or limitations on how long an implied warranty last, so the above exclusions or limitations may not apply to you. This warranty gives you specific legal rights that vary from state to state. If a problem with this product develops during or after the warranty period, you may contact your

Specification:

CS8 120 Volt, 7 Amp 60Hz, Weight 5.5 lb
CS-RM 120 Volt, 7 Amp 60Hz, Weight 5.6 lb

Parts List:

Vacuum Cleaner with screws and clamps
Vacuum tool kit: various
Paper template #W608

Read the Safety Instruction on the switch side behind the front panel !

CAUTION: DISCONNECT POWER BEFORE ATTEMPTING TO INSTALL THIS UNIT.
CHECK FOR ANY OBSTRUCTIONS BEHIND THE MOUNTING SURFACE

interVac™

CS8 and CS-RM with POWER CORD

DO NOT USE WITH EXTENSION CORD

Recessed Installation into Wood or other Hard Surface Walls:

The central vacuum should be mounted so that power supply cord can be plugged directly into a electrical outlet.
Choose a place that is centrally located to maximize the reach with the vacuum hose.

The minimum wall thickness is 3/8" the maximum is 1".

The cut-out in the wall is 11" wide X 6" high and requires a minimum depth of 6"

Very important: If you installed the vacuum in a very small cabinet you must make provisions to exhaust the air from the vacuum out of the cabinet.

Option 1: Cut a hole in the cabinet a minimum 3", attach a louver to cover the hole.

Option 2: Use our part #B560 exhaust fitting with a 2" diameter flex-hose to guide the warm air to the outside, or to where ever you prefer. See page 8 options

Step A. Tape the paper template against the surface at a comfortable operating height

Step B. With a skill saw cut along the dotted line of the paper template.

Step C. Slide the unit, power cord in first, into the opening and secure by tightening the four attached screws with the "clamps". Do not over-tighten.

Step D. Check to be sure dust bag and motor filter are in place.

Step E. Install the remote vacuum valve (**CS-RM** model only). Then route the flex-hose from the valve to the vacuum.

Step F. From the remote vacuum valve install 2 yellow 20 gage, UL approved (AVLV2) rated minimum 300volt, 95 C, wires (24 volt line) along the flex-hose to the bottom of the vacuum to the 2 **yellow pigtails**.

Secure the wires with "ty-wraps" to the flex-hose.

Connect yellow wires with butt connectors **outside** the Housing.

interVac™

CS8-F and CS-RM-F Hard Wired

Same wall installation procedure as above , steps A through D.

Step 1. From the Circuit Breaker run a 14 gage Romex cable to the back of the vacuum.

Step 2. Slide the wire cover (supplied) over the cable.

Step 3. Strip the 3 wires about 5/8" and attach the Black to "L", the white wire to "N" (neutral) and the GROUND wire to the "G" connection.

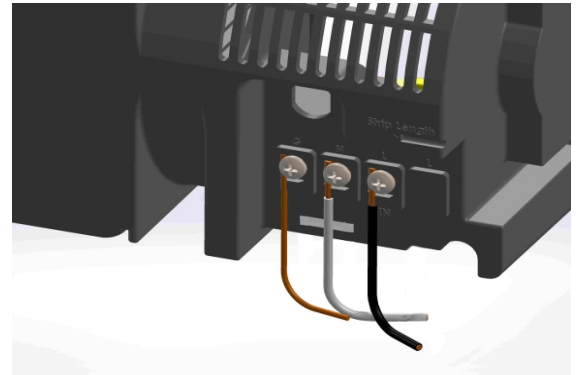
Step 4. Press the wire cover into the 2 slots above and below the cable connections. Then attach the small screw.

Step 5. Install the remote vacuum valve (**CS-RM** model only). Then route the flex-hose from the valve to the vacuum.

Step 6. From the remote vacuum valve install 2 yellow 20 gage, UL approved (AVLV2) rated minimum 300volt, 95 C, wires (24 volt line) along the flex-hose to the bottom of the vacuum to the 2 **yellow pigtails**.

Secure the wires with "ty-wraps" to the flex-hose.

Connect yellow wires with butt connectors **outside** the Housing.



interVac™ CS6 Hard Wired for Power Management

use 14 gage Romex wire

Same wall installation procedure as on page 4, steps A through D.

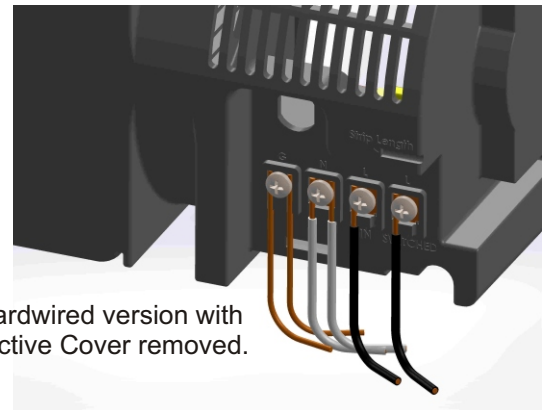
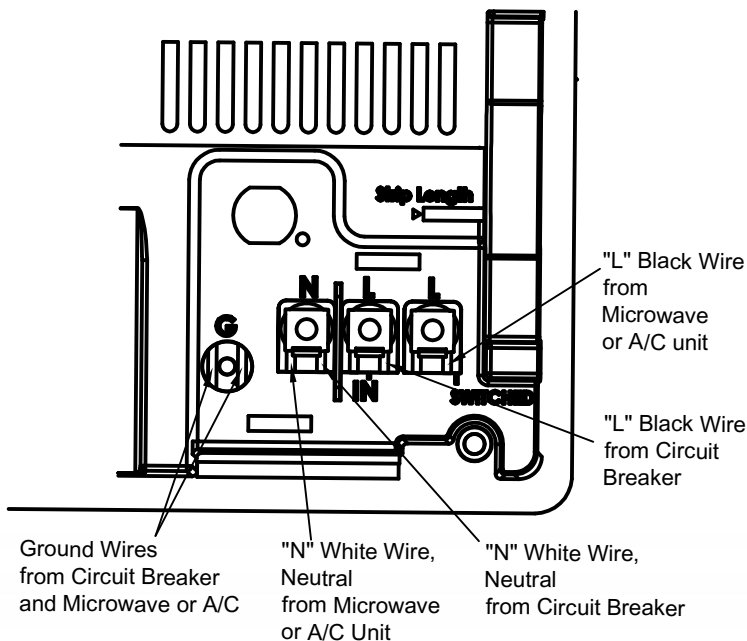
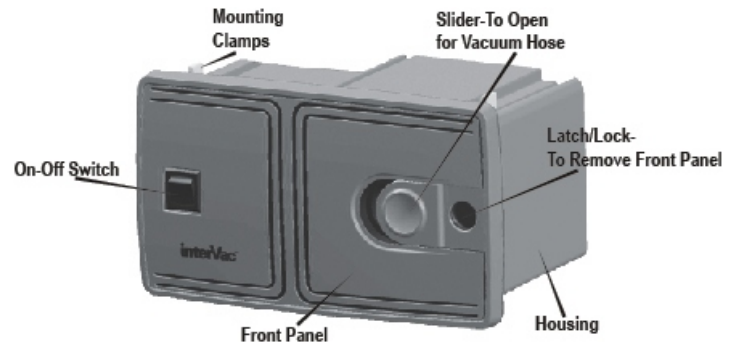
The CS6 version was designed for limited amperage availability. If for example you use the microwave oven or your air conditioner with the vacuum cleaner at the same time your circuit breaker might be overloaded.

AFTER INSTALLING THE FOLLOWING ELECTRICAL CONNECTIONS YOU CAN ONLY RUN ONE APPLIANCE AT A TIME.

The following installation can be made only by a qualified electrician

To prevent overloading the circuit breaker:

- Step 1.** Turn off the breaker to the area you will install the unit in.
- Step 2.** Find the power cable connecting the Microwave Oven to the Circuit Breaker.
- Step 3.** Disconnect the exciting cable at the Microwave Oven.
Reroute the cable to the vacuum cleaner installation.



CS hardwired version with Protective Cover removed.

- Step 4.** In the back of the vacuum find the wire connections
- Step 5.** Strip all 3 wires by about 5/8".
Tip: leave a loop in the wires from the vacuum to the wall where the cables are securely attached.
- Step 6.** From the Microwave (or other appliance) connect the Black wire to "L" (line)(switched), the White wire into "N" (neutral) and connect the Ground wire under the washer screw head to "G".
- Step 7.** From the Circuit Breaker run a new 14 or 12 gage Romex cable to the back of the vacuum.
- Step 8.** Strip the 3 wires and attach the Black to "L", the White wire into the other "N" (neutral) and the GROUND wire to the other "G" connection.
- Step 9.** Attach the wire cover (supplied) over the connections by guiding the wires through the opening at the bottom of the cover and screw cover into place.
- Step 10.** On the front side of the vacuum, toggle the switch to "SOURCE".
- Step 11.** Switch-on the circuit breaker and check if the other appliance is operating.
- Step 12.** Now toggle the switch on the Vacuum to "VAC".
The other appliance will stop operating and the Central Vacuum is ready for use.

HOW TO OPERATE YOUR VACUUM CLEANER

IF THE VACUUM STOPS RUNNING:

If the vacuum hose becomes clogged the motor will shut off. Push the switch into “source” (Model CS8-R) or “off” position (Model CS8-C) and let the motor cool down for one hour. Restart the vacuum without the vacuum hose attached and push the slider cover to open on the front panel, let the vacuum run for about 10 minutes. If vacuum keeps running the hose or the tools are clogged.

PLEASE SEE TROUBLE SHOOTING GUIDE.

A. Connecting and disconnecting the friction vacuum hose.

1. Push the slider cover on the front panel to the open position.
2. Insert hose cuff with a twist and push to secure.
3. To remove, turn cuff in either direction while pulling hose towards you.

B. On / Off Switch

1. To start the vacuum cleaner, push the switch to the “I” on or “VAC” position depending on your model.
2. To stop the vacuum cleaner, push the switch to the “O” off or “MICRO / SOURCE” position depending on Model.

C: How to change the Y10 dust bag. DO NOT REUSE DUST BAGS

CS6 and CS8 MODELS single collar bag

Replacement bag: Part # Y10 high filtration 5 layer fiber bag.

1. Remove the front panel on the vacuum cleaner by sliding the latch/lock to the left and remove the front panel and dust bag.
2. Carry front panel and dust bag to the trash container. Remove full bag and discard.
3. Push the card board collar of the new dust bag all the way over the pipe on the front panel. Pictures A to C
4. Slide the front panel, with the left side first into the small slots on the left side of the vacuums frame, ensure dust bag is completely inside compartment, then push the right side into the frame until the lock/latch clicks into place. With your thumb you might have to push the lock/latch further to the right.

Picture A



Picture B



Picture C



C: To change motor filter, Replacement Part # Y22

1. Remove FRONT PANEL with DUST BAG.
2. On the left side, inside the vacuum chamber, you will see the filter with the arrow pointing towards the back wall.
3. Replace the filter with a new or cleaned filter, with the arrow pointing towards the back wall check that the filter stays on the left side of the top and bottom frame.
4. If the filter is dirty you can wash in mild soap by hand.

Do not clean in washing machine. Let filter dry completely and reuse as needed.

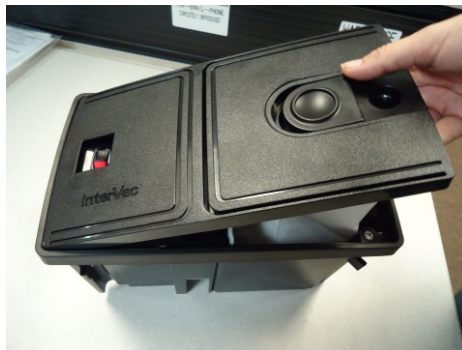
Attaching Front Panel and Dust Bag to Vacuum

Picture D



Insert Motor filter first, then slide dust bag into vacuum chamber.

Picture E



Slide front panel with left side into the vacuum frame. Watch out that bag does not get clamped between front panel and frame!

Picture F



Snap front panel down into the frame and push the latch hard to the right to lock.

C: How to change the Y11 dust bag. DO NOT REUSE DUST BAGS

CS-RM MODELS double collar bag

Replacement bag: Part # Y11 high filtration 5 layer fiber bag.

1. Remove the front panel on the vacuum cleaner by sliding the latch/lock to the left and remove the front panel and dust bag. Remove full bag and discard.
2. Please notice: the #Y11 double sided bag has 2 openings. The collar which attaches in the **back** of the vacuum chamber is clearly marked **"PUSH THIS COLLAR OVER PIPE IN THE VACUUM CHAMBER FIRST"** Hold the dust in your hand like shown in the picture #1 below. Then push onto "scooped pipe" in the back **Pic.#2**.
3. Push the front cardboard collar of the dust bag all the way over the pipe on the front panel, **Pic.#3**
4. Slide the front panel, with the left side first into the small slots on the left side of the vacuums frame, **see Pic's E and F above**. Ensure dust bag is completely inside compartment, then push the right side into the frame until the lock/latch clicks into place.

Picture 1



Picture 2



Picture 3



C: To change motor filter, replacement Part # Y22

1. Remove FRONT PANEL with DUST BAG.
2. On the left side, inside the vacuum chamber, you will see the filter with the arrow pointing towards the back wall.
3. Replace the filter with a new or cleaned filter, with the arrow pointing towards the back wall check that the filter stays on the left side in the top and bottom support. If the filter is dirty you can wash in mild soap by hand.

TROUBLE SHOOTING:

TIP : If using our very convenient stretch hose, be aware there will be some loss of suction power, should you require more suction power, we recommend you try our traditional central vacuum hose.

NOTE: IF MOTOR SUDDENLY STOPS:

1. The most common cause is a clogged hose. Disconnect vacuum hose from cleaner, hold one end high up in the air and drop a quarter or similar object into the hose. If the quarter gets stuck the hose is clogged. Try to unclog the hose with a long stick or see below "cleaning the hose".
2. The bag is overfilled or fine dust has clogged the bag.
Replace with new bag.
DO NOT EMPTY AND REUSE
3. The vacuum cleaning tools are clogged.
4. Vacuuming large amounts of dust other than household dirt, such as dry-wall or fine wood dust can block the bags pores fast, even if the bag is fairly new.
5. The motor filter is dirty and should be cleaned or replaced.
6. If vacuum unit is installed in a air tight compartment the exhausting air cannot escape, the motor can overheat and shut off until it has cooled down and is restarted. See page 3 "very important".

CLEANING THE STRETCH HOSE:

The stretch hose, besides all its' conveniences, has a tendency to get clogged, especially if you have pets.

- a) lift the hose up on both ends and dispense some liquid detergent into both ends.
- b) with a garden hose, holding both ends still up, fill $\frac{3}{4}$ with water.
- c) shake hose up and down, let detergent loosen the dirt.
- d) stretch the hose as far as you can (2 people required) and wash the dirt out with the full pressure of the garden hose. Repeat if necessary.
- e) Hang hose up, let hose drain and dry completely, up to 24 hours.

MAINTENANCE INSTRUCTION:

- a) keep vacuum chamber clean. Use a brush to clean out dirt if accumulated.

Options:



Exhausting the warm air from the vacuum outside the cabinet when vacuum is to be installed in a very confined space.

Ask for assembly **part #A612**.

Consists of funnel which snaps into back of vacuum.

2.5 feet of flex-hose X640

and flanged spigot

Attach flex-hose to funnel and spigot with PVC glue or hose clamps.



VacPort sweeper pan.

Model **A900** with LED lighting

Model **A910** with out LED lighting

For CS8-RM models only.

Besides a standard vacuum valve you could add the VacPort in your kitchen cabinet's kick-board and use a broom to quick clean the floor.

**Paper Template W608
for all CS Models**

**Edge of template paper is the cutting line:
11"(280mm)wide**

6 [152]

