



TRI-GLIDE PINBOX LOWER JAW REPLACEMENT

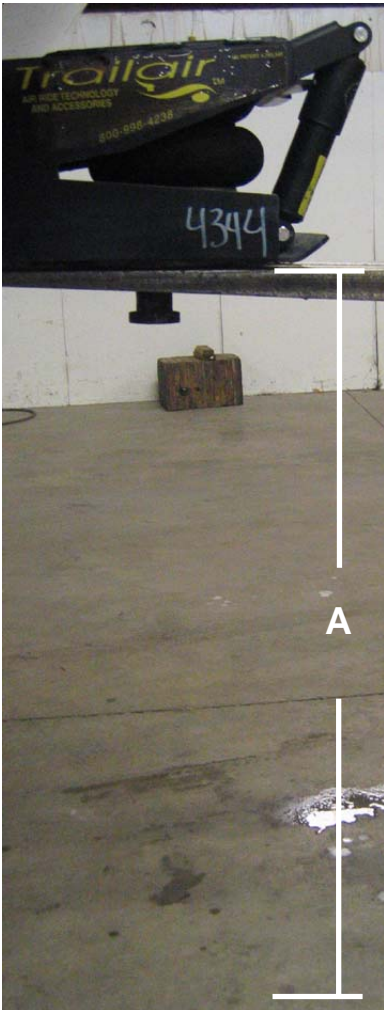


Tri-Glide Lower Jaw



Trail-Air Pinbox with standard lower jaw.

CAUTION! LEVEL THE 5TH WHEEL BEFORE PERFORMING THIS REPLACEMENT



If pinbox needs to be raised to accommodate Tri-Glide lower jaw, while supporting pinbox with forklift or jacks, remove mounting bolts and remount pinbox in the next set of higher holes.



Deflate air bag and remove valve, and mounting bolts.

Take measurement from floor to pin plate on bottom of pinbox, "A." The Tri-Glide lower jaw sets 1 1/2" lower than the Trailair lower jaw. The pinbox may need to be raised or the hitch lowered to accommodate the difference.



TRI-GLIDE PINBOX LOWER JAW REPLACEMENT



Disengage shock bolts and remove shock.



Remove lower jaw pivot bolts and washers on both sides.



Remove lower jaw pivot pin.



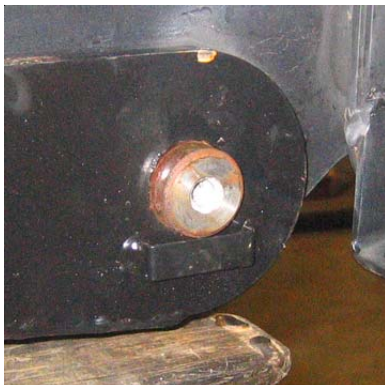
Remove lower jaw slowly, jaw is heavy. Works best by simply lowering forks of the forklift. Slide airbag over and disengage.



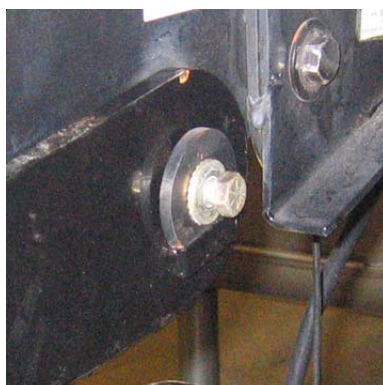
Set old lower jaw aside and place the Tri-Glide lower jaw in it's place. Mount airbag. Place bolt head in hole and slide into place.



Lift Tri-Glide jaw into place.



Place pivot pin in hole and push into place.



Install washers and bolts on both sides do not tighten yet. Torque bolts 90 - 110 ft. lb.



Install shock, do not tighten bolts yet.



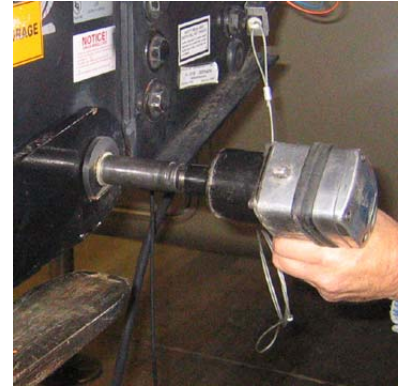
TRI-GLIDE PINBOX LOWER JAW REPLACEMENT



Replace air valve and air bag mounting bolts, tighten into place.



Tighten shock mounting bolts. Torque bolts 90 - 110 ft. lb.



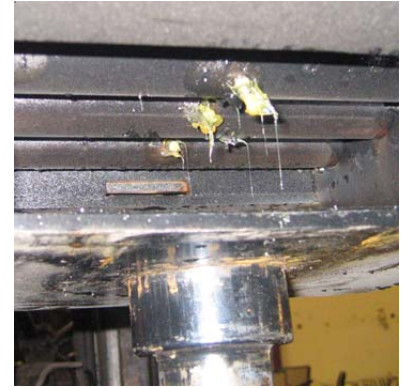
Tighten pivot pin bolts. Torque bolts 90 - 110 ft. lb.



Fill airbag. Test airbag for leaks using soapy water procedure.



Grease all zerks, there are a total of 9; 3 on each side of the Tri-Glide jaw...



...and 3 up and underneath the back side of the pinbox.