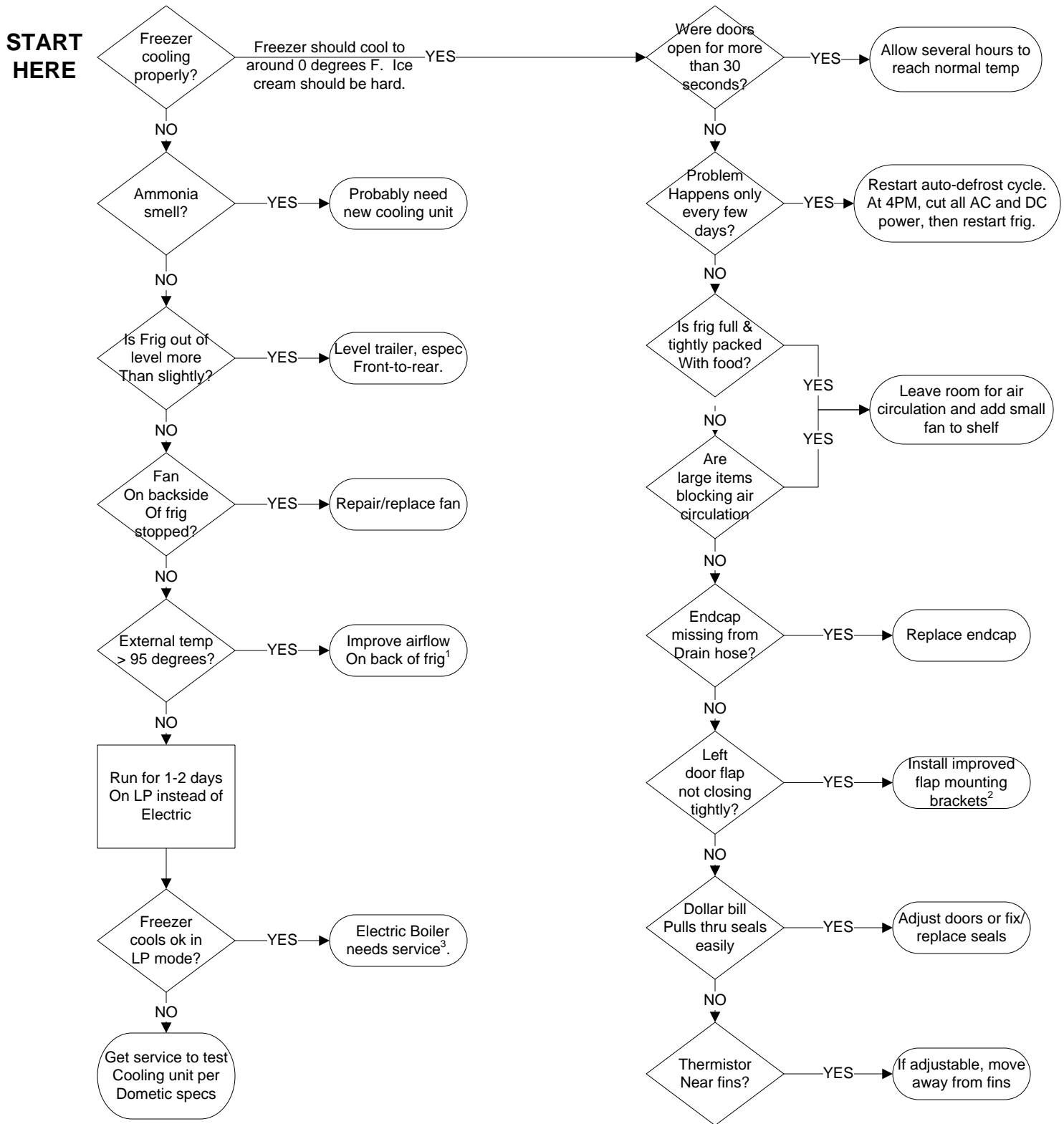


Dometic RM1350 Troubleshooting Guide for Poor Cooling

For use when the temperature indicator is consistently greater than 39 degrees
Assumed to be running on 110V shore power, Temp Setting on '5'



1. Add ventilator fan kit 3108705.744 (or equivalent) and check that baffle is directing air across the condenser fins before exiting top vent.

2. Flap mounting brackets: new part #s 3851102024 and 3851103022

3. User manual has instructions on replacing electric heating unit. With heater leads removed, element should show 40-70 ohms